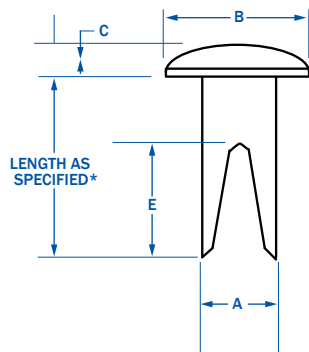


RIVETKING® OTHER RIVETS

SEMI TUBULAR RIVETS

SPLIT RIVETS OR BIFURCATED RIVETS



Split rivets are typically used in the luggage, case and leather goods industries to fasten soft materials such as plastics, animal hide and wood. With automatic setting equipment it can pierce through soft materials without a pre-punched hole. Typically offered in Steel or Brass material with a host of metal finishes such as zinc, nickel, or brass plating.

Note: 3/16", Bag Studs and custom sizes can be made upon request.

SIZE	A		B		C		CLINCH ALLOWANCE
	SHANK Max.	SHANK Min.	HEAD DIA. Max.	HEAD DIA. Min.	HEAD THICKNESS Max.	HEAD THICKNESS Min.	
0.092	0.092	0.085	0.152	0.142	0.026	0.020	.119
0.125	0.125	0.113	0.223	0.213	0.035	0.027	.119
0.152	0.152	0.144	0.318	0.306	0.045	0.035	.146
0.190	0.190	0.180	0.349	0.337	0.055	0.045	.146

METAL PIERCING



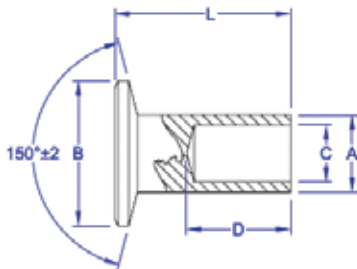
To join two or more sections of a sheet metal assembly permanently and without pre-punching or pre-drilling holes. Eliminates the cost of pre-punching or pre-drilling holes and reduces material handling. Low unit cost and applied by high speed automatic feed riveting machines to further reduce assembly time and cost. Setting can provide a leak proof seal.

ELECTRICAL CONTACT



To act as an electrical contact. Electrical contact rivets can be made with precious metals such as gold, silver, platinum, copper as well as silver-cadmium oxide materials. The manufacturing method is extremely economical because the contact face can be produced of high performance precious metals while the shank can be made of lower cost metals. Also known as Bi-Metal or Tri-Metal rivets.

BRAKE LINING RIVETS



PART CODE	RIVET SIZE	L		B		A		C		D	
		LENGTH Max.	LENGTH Min.	HEAD DIA. Max.	HEAD DIA. Min.	BODY DIA. Max.	BODY DIA. Min.	HOLE DIA. Max.	HOLE DIA. Min.	HOLE DEPTH Max.	HOLE DEPTH Min.
XB-3MM	3mm	.245	.260	.225	.245	.121	.125	.086	.090	.125	.135
XB-6MM	6mm	.365	.385	.458	.478	.235	.240	.170	.174	.240	.260
XB-4-4		.245	.260								
XB-4-4.5		.274	.288	.285	.305						
XB-4-5	9/64"	.312	.328			.141	.146	.099	.104	.136	.150
XB-5-4		.245	.260								
XB-5-4.5	13/64"	.274	.288	.349	.369						
XB-5-5		.312	.328								
XB-6-4	3/16"	.245	.260								
XB-6-4.5		.274	.288								
XB-6-5	1/4"	.312	.328	.349	.369	.182	.188	.133	.139	.187	.200
XB-6-5.5		.335	.350								
XB-6-6		.375	.390								
XB-7-4		.245	.260								
XB-7-4.5		.274	.288								
XB-7-5		.312	.328								
XB-7-5.5		.336	.350	.349	.369						
XB-7-6		.375	.390								
XB-7-6.5		.406	.421								
XB-7-7		.437	.452								
XB-8-4		.245	.260								
XB-8-5		.312	.328								
XB-8-6		.375	.390								
XB-8-7		.435	.450	.458	.478						
XB-8-8		.500	.515								
XB-8-9		.560	.575								
XB-10-6		.375	.390								
XB-10-7		.435	.450								
XB-10-8		.500	.515	.458	.478	.244	.252	.173	.183	.245	.255
XB-10-10		.620	.635								
XB-10-12		.745	.760								