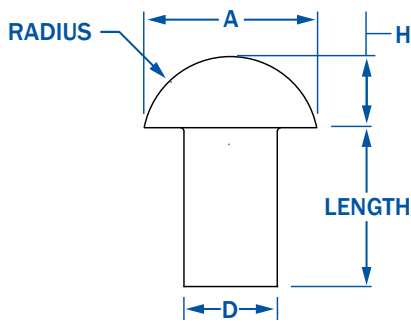


# RIVETKING® ALUMINUM SOLID RIVET HEAD STYLES

ALUMINUM RIVETS

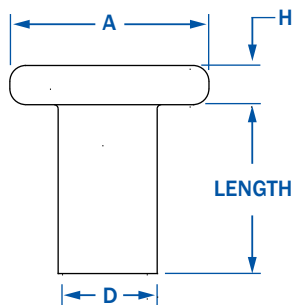
## ROUND HEAD



APPROXIMATE PROPORTIONS:  
 $A = 2.00 \times D$   
 $H = 0.75 \times D$   
 $R = 1.042 \times D$

| D                |         | A             | H           | R           |
|------------------|---------|---------------|-------------|-------------|
| NOMINAL DIAMETER |         | HEAD DIAMETER | HEAD HEIGHT | HEAD RADIUS |
| FRACTION         | DECIMAL |               |             |             |
| 3/32             | 0.094   | 0.187         | 0.070       | 0.098       |
| 1/8              | 0.125   | 0.250         | 0.094       | 0.130       |
| 5/32             | 0.156   | 0.312         | 0.117       | 0.163       |
| 3/16             | 0.187   | 0.375         | 0.141       | 0.195       |
| 1/4              | 0.250   | 0.500         | 0.188       | 0.260       |
| 5/16             | 0.312   | 0.625         | 0.234       | 0.326       |
| 3/8              | 0.375   | 0.750         | 0.281       | 0.391       |

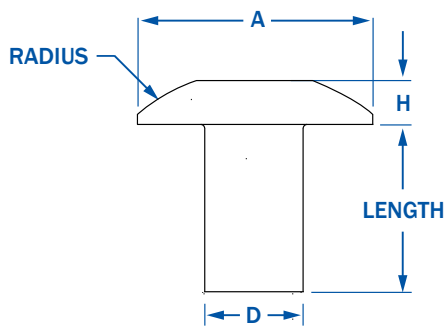
## FLAT HEAD



APPROXIMATE PROPORTIONS:  
 $A = 2.00 \times D$   
 $H = 0.40 \times D$

| D                |         | A             | H           |
|------------------|---------|---------------|-------------|
| NOMINAL DIAMETER |         | HEAD DIAMETER | HEAD HEIGHT |
| FRACTION         | DECIMAL |               |             |
| 3/32             | 0.094   | 0.187         | 0.038       |
| 1/8              | 0.125   | 0.250         | 0.050       |
| 5/32             | 0.156   | 0.312         | 0.062       |
| 3/16             | 0.187   | 0.375         | 0.075       |
| 1/4              | 0.250   | 0.500         | 0.100       |
| 5/16             | 0.312   | 0.625         | 0.125       |
| 3/8              | 0.375   | 0.750         | 0.150       |

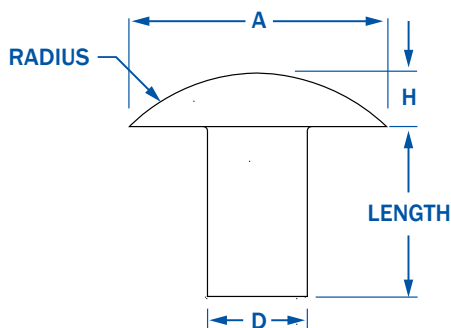
## UNIVERSAL HEAD



APPROXIMATE PROPORTIONS:  
 $A = 2.000 \times D$   
 $H = 0.465 \times D$   
 $R = 0.872 \times D$

| D                |         | A             | H           | R           |
|------------------|---------|---------------|-------------|-------------|
| NOMINAL DIAMETER |         | HEAD DIAMETER | HEAD HEIGHT | HEAD RADIUS |
| FRACTION         | DECIMAL |               |             |             |
| 3/32"            | 0.094   | 0.187         | 0.045       | 0.082       |
| 1/8"             | 0.125   | 0.250         | 0.059       | 0.108       |
| 5/32"            | 0.156   | 0.312         | 0.072       | 0.135       |
| 3/16"            | 0.187   | 0.375         | 0.085       | 0.164       |
| 1/4"             | 0.250   | 0.500         | 0.112       | 0.217       |
| 5/16"            | 0.312   | 0.625         | 0.138       | 0.272       |
| 3/8"             | 0.375   | 0.750         | 0.166       | 0.328       |

## BRAZIER HEAD



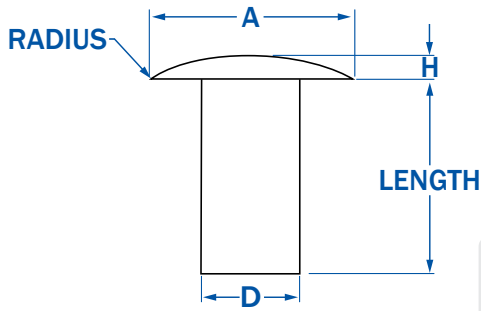
APPROXIMATE PROPORTIONS:  
 $A = 2.50 \times D$   
 $H = 0.50 \times D$   
 $R = 1.8125 \times D$

| D                |         | A             | H           | R           |
|------------------|---------|---------------|-------------|-------------|
| NOMINAL DIAMETER |         | HEAD DIAMETER | HEAD HEIGHT | HEAD RADIUS |
| FRACTION         | DECIMAL |               |             |             |
| 3/32"            | 0.094   | 0.234         | 0.047       | 0.170       |
| 1/8"             | 0.125   | 0.312         | 0.062       | 0.227       |
| 5/32"            | 0.156   | 0.391         | 0.078       | 0.283       |
| 3/16"            | 0.187   | 0.469         | 0.094       | 0.340       |
| 1/4"             | 0.250   | 0.625         | 0.125       | 0.453       |
| 5/16"            | 0.312   | 0.781         | 0.156       | 0.566       |
| 3/8"             | 0.375   | 0.937         | 0.187       | 0.680       |

# RIVETKING® ALUMINUM SOLID RIVET HEAD STYLES

ALUMINUM RIVETS

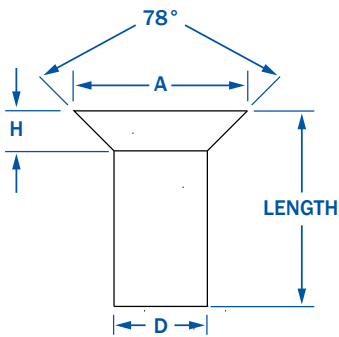
## MODIFIED BRAZIER HEAD



APPROXIMATE PROPORTIONS:  
 $A = 1.94 \times D$   
 $H = 0.33 \times D$

| D                |         | A             | H           |
|------------------|---------|---------------|-------------|
| NOMINAL DIAMETER |         | HEAD DIAMETER | HEAD HEIGHT |
| FRACTION         | DECIMAL |               |             |
| 3/32"            | 0.094   | 0.156         | 0.031       |
| 1/8"             | 0.125   | 0.235         | 0.047       |
| 5/32"            | 0.156   | 0.312         | 0.063       |
| 3/16"            | 0.187   | 0.390         | 0.078       |
| 1/4"             | 0.250   | 0.468         | 0.094       |
| 5/16"            | 0.312   | 0.625         | 0.125       |
| 3/8"             | 0.375   | 0.781         | 0.156       |

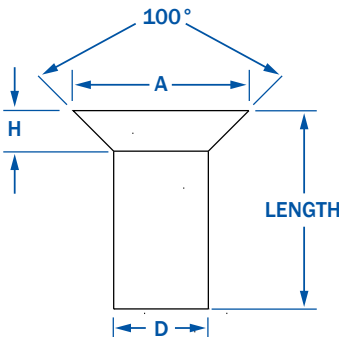
## 78° COUNTERSUNK HEAD



APPROXIMATE PROPORTIONS:  
 $A = 2.81 \times D$   
 $H = 0.50 \times D$

| D                |         | A             | H           |
|------------------|---------|---------------|-------------|
| NOMINAL DIAMETER |         | HEAD DIAMETER | HEAD HEIGHT |
| FRACTION         | DECIMAL |               |             |
| 3/32             | 0.094   | 0.170         | 0.047       |
| 1/8              | 0.125   | 0.225         | 0.065       |
| 5/32             | 0.156   | 0.282         | 0.078       |
| 3/16             | 0.187   | 0.339         | 0.094       |
| 1/4              | 0.250   | 0.452         | 0.125       |
| 5/16             | 0.312   | 0.565         | 0.156       |
| 3/8              | 0.375   | 0.678         | 0.187       |

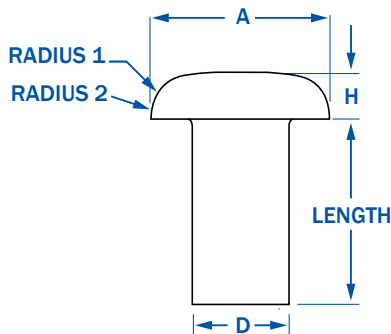
## 100° COUNTERSUNK HEAD



APPROXIMATE PROPORTIONS:  
 $A = 1.54 \times D$   
 $H = 0.26 \times D$

| D                |         | A             | H           |
|------------------|---------|---------------|-------------|
| NOMINAL DIAMETER |         | HEAD DIAMETER | HEAD HEIGHT |
| FRACTION         | DECIMAL |               |             |
| 3/32             | 0.094   | 0.170         | 0.036       |
| 1/8              | 0.125   | 0.216         | 0.042       |
| 5/32             | 0.156   | 0.278         | 0.055       |
| 3/16             | 0.187   | 0.344         | 0.070       |
| 1/4              | 0.250   | 0.467         | 0.095       |
| 5/16             | 0.312   | 0.555         | 0.106       |
| 3/8              | 0.375   | 0.685         | 0.134       |

## MUSHROOM HEAD



APPROXIMATE PROPORTIONS:  
 $A = 2.000 \times D$   
 $H = 0.625 \times D$   
 $R = 1.634 \times D$   
 $R_1 = 0.050 \times D$

| D                |         | A             | H           | R           | R <sub>1</sub>           |
|------------------|---------|---------------|-------------|-------------|--------------------------|
| NOMINAL DIAMETER |         | HEAD DIAMETER | HEAD HEIGHT | HEAD RADIUS | HEAD RADIUS <sub>1</sub> |
| FRACTION         | DECIMAL |               |             |             |                          |
| 3/32"            | 0.094   | 0.187         | 0.059       | 0.153       | 0.147                    |
| 1/8"             | 0.125   | 0.250         | 0.078       | 0.204       | 0.062                    |
| 5/32"            | 0.156   | 0.312         | 0.098       | 0.255       | 0.078                    |
| 3/16"            | 0.187   | 0.375         | 0.117       | 0.306       | 0.094                    |
| 1/4"             | 0.250   | 0.500         | 0.156       | 0.408       | 0.125                    |
| 5/16"            | 0.312   | 0.625         | 0.195       | 0.511       | 0.156                    |
| 3/8"             | 0.375   | 0.750         | 0.234       | 0.613       | 0.187                    |