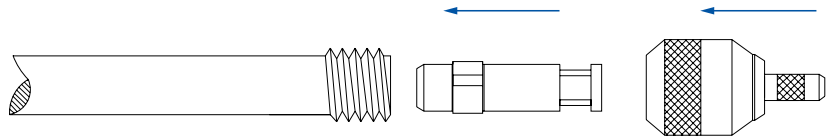


RIVETKING® SET-UP & ASSEMBLY PROCESS

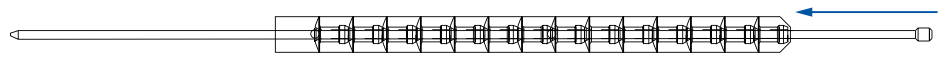
STEP 1:

Install the Indexing Cursor into the barrel portion of the rivet tool making sure it is facing the proper direction. Then screw on the Nose Jaw Assembly on to the barrel.



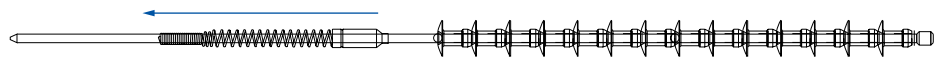
STEP 2:

Insert the mandrel into the hole of the podded rivets. Then tear off and dispose of the podding paper.



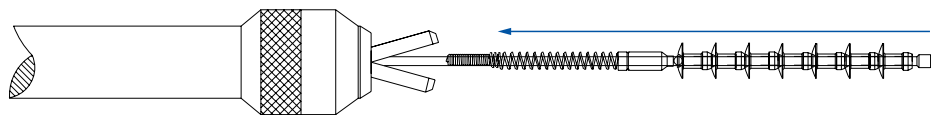
STEP 3:

Insert the mandrel spring onto the mandrel in the proper direction.



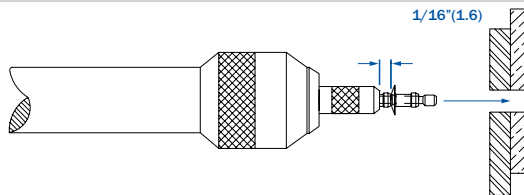
STEP 4:

Split the nose jaw open and insert the mandrel assembly (mandrel, spring and rivets), inside the nose jaw until the last rivet remains outside of the nose jaw.



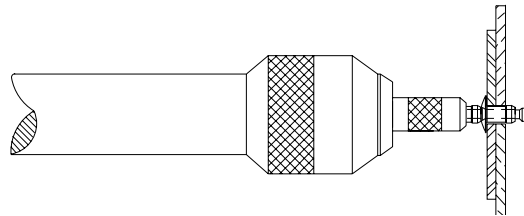
STEP 5:

Make sure the head of the rivet is about 1/16" away from the front of the nose jaw. Proper spacing must be assured.



STEP 6:

Using the handle of the tool, insert the rivet and mandrel through the hole of your work piece until the head is sitting flush on the bearing surface. Pull the trigger to actuate the tools cycle and clinch the rivet.



STEP 7:

After proper assembly, the next rivet will automatically feed through the nose jaw to advance the next rivet.

