

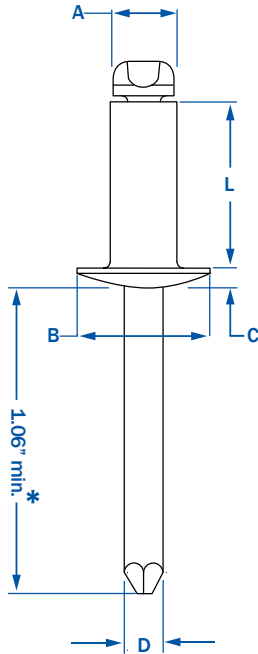
RIVETKING® SBS SERIES • ALL STEEL BLIND RIVETS • OPEN END

RIVET: STEEL TRIVALENT ZINC PLATED • MANDREL: STEEL TRIVALENT ZINC PLATED

RIVETKING®/CELUS® STEEL/STEEL BLIND RIVETS ARE EQUIPPED WITH PITCHED MANDREL DESIGN THAT IS ENVELOPED BY THE RIVET DURING APPLICATION TO PREVENT MANDREL FALLOUT. Offered in two configurations, RivetKing® Brand All Steel Zinc Plated or Celus® Brand, Steel with Phosphate mandrel. Phosphated mandrels reduce rivet gun jaw cleaning, while zinc plated mandrels provide for greater rust protection. The SBS series is ranked #3 in both shear and tensile strength in the open end blind rivet category. Per IFI -114 Grade 30

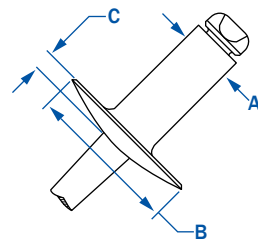


STANDARD FLANGE-DOME HEAD



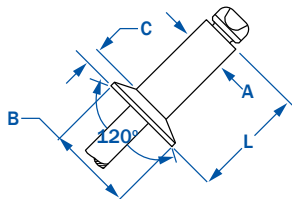
| A | | | L | B | C | D | HOLE SIZE (DRILL #) | STRENGTH | | Wt. lbs/M |
|-------|-------------|-------------|--------------|-----------|-------------|--------------|---------------------|----------|---------|-----------|
| DIA. | PART NUMBER | GRIP RANGE | RIVET LENGTH | HEAD DIA. | HEAD HEIGHT | MANDREL DIA. | | SHEAR | TENSILE | |
| 3/32" | SBS - 32 | .020 - .125 | .250 | .188 | .032 | .057 | .097 - .100 (#41) | 130 | 170 | 1.50 |
| | SBS - 34 | .126 - .250 | .375 | | | | | | | 1.70 |
| | SBS - 41 | .020 - .062 | .212 | | | | | | | 2.80 |
| | SBS - 42 | .063 - .125 | .275 | | | | | | | 2.90 |
| | SBS - 43 | .126 - .187 | .337 | | | | | | | 3.10 |
| 1/8" | SBS - 44 | .188 - .250 | .400 | .250 | .040 | .076 | .129 - .133 (#30) | 260 | 310 | 3.30 |
| | SBS - 45 | .251 - .312 | .462 | | | | | | | 3.60 |
| | SBS - 46 | .313 - .375 | .525 | | | | | | | 3.70 |
| | SBS - 48 | .376 - .500 | .650 | | | | | | | 3.70 |
| | SBS - 410 | .501 - .625 | .775 | | | | | | | 4.78 |
| | SBS - 412 | .626 - .750 | .900 | | | | | | | |
| | SBS - 52 | .020 - .125 | .300 | | | | | | | |
| 5/32" | SBS - 53 | .126 - .187 | .362 | .312 | .050 | .095 | .160 - .164 (#20) | 370 | 470 | 5.13 |
| | SBS - 54 | .188 - .250 | .425 | | | | | | | 5.25 |
| | SBS - 56 | .251 - .375 | .550 | | | | | | | 5.50 |
| | SBS - 58 | .376 - .500 | .675 | | | | | | | 6.67 |
| | SBS - 62 | .020 - .125 | .325 | | | | | | | 6.83 |
| | SBS - 63 | .126 - .187 | .387 | | | | | | | 7.80 |
| 3/16" | SBS - 64 | .188 - .250 | .450 | .375 | .060 | .114 | .192 - .196 (#11) | 540 | 680 | 8.20 |
| | SBS - 66 | .251 - .375 | .575 | | | | | | | 8.60 |
| | SBS - 68 | .376 - .500 | .700 | | | | | | | 9.40 |
| | SBS - 610 | .501 - .625 | .825 | | | | | | | 10.75 |
| | SBS - 612 | .626 - .750 | .950 | | | | | | | 11.75 |
| | SBS - 614 | .751 - .875 | 1.075 | | | | | | | 14.33 |
| | SBS - 616 | .876 - 1.00 | 1.200 | | | | | | | 14.67 |
| | SBS - 84 | .020 - .250 | .500 | | | | | | | |
| 1/4" | SBS - 86 | .251 - .375 | .625 | .500 | .080 | .151 | .257 - .261 (F) | 1000 | 1240 | 16.50 |
| | SBS - 88 | .376 - .500 | .750 | | | | | | | 17.50 |
| | SBS - 810 | .501 - .625 | .875 | | | | | | | 19.00 |
| | SBS - 812 | .626 - .750 | 1.000 | | | | | | | 23.00 |
| | SBS - 814 | .751 - .875 | 1.125 | | | | | | | 24.50 |
| | SBS - 816 | .876 - 1.00 | 1.250 | | | | | | | 27.00 |
| | SBS - 816 | .876 - 1.00 | 1.250 | | | | | | | 28.00 |

LARGE FLANGE



| | | | | | | | | | | |
|-------|-------------|-------------|-------|------|------|------|-------------------|------|------|-------|
| 1/8" | SBS - 42LF | .063 - .125 | .275 | .375 | .065 | .076 | .129 - .133 (#30) | 260 | 310 | 3.30 |
| | SBS - 43LF | .126 - .187 | .337 | | | | | | | 3.50 |
| | SBS - 44LF | .188 - .250 | .400 | | | | | | | 3.60 |
| | SBS - 46LF | .313 - .375 | .525 | | | | | | | 4.63 |
| | SBS - 48LF | .376 - .500 | .650 | | | | | | | 4.63 |
| 5/32" | SBS - 52LF | .020 - .125 | .300 | .468 | .075 | .095 | .160 - .164 (#20) | 370 | 470 | 7.50 |
| | SBS - 54LF | .188 - .250 | .425 | | | | | | | 8.33 |
| | SBS - 56LF | .251 - .375 | .550 | | | | | | | |
| | SBS - 62LF | .020 - .125 | .325 | | | | | | | |
| 3/16" | SBS - 64LF | .188 - .250 | .450 | .625 | .092 | .114 | .192 - .196 (#11) | 540 | 680 | 12.67 |
| | SBS - 66LF | .251 - .375 | .575 | | | | | | | 13.33 |
| | SBS - 68LF | .376 - .500 | .700 | | | | | | | 14.67 |
| | SBS - 610LF | .501 - .625 | .825 | | | | | | | 16.00 |
| | SBS - 612LF | .626 - .750 | .950 | | | | | | | 16.00 |
| | SBS - 614LF | .751 - .875 | 1.075 | | | | | | | 17.00 |
| | SBS - 616LF | .876 - 1.00 | 1.200 | | | | | | | 18.00 |
| 1/4" | SBS - 88LF | .376 - .500 | .750 | .750 | 1.07 | .151 | .257 - .261 | 1000 | 1240 | |

COUNTERSUNK



| | | | | | | | | | | |
|-------|----------|-------------|------|------|------|------|-------------------|-----|-----|------|
| 1/8" | SCS - 42 | .063 - .125 | .275 | .220 | .031 | .076 | .129 - .133 (#30) | 260 | 310 | 3.00 |
| | SCS - 43 | .126 - .187 | .337 | | | | | | | 3.10 |
| | SCS - 44 | .188 - .250 | .400 | | | | | | | 3.30 |
| 5/32" | SCS - 54 | .188 - .250 | .425 | .281 | .040 | .095 | .160 - .164 | 370 | 470 | 5.25 |
| 3/16" | SCS - 64 | .188 - .250 | .450 | .350 | .050 | .114 | .192 - .196 (#11) | 540 | 680 | 8.20 |
| | SCS - 66 | .251 - .375 | .575 | | | | | | | 9.60 |

* 1/4" Diameter rivets have a 1.250 mandrel length minimum.

** Celus® Steel Zinc Plated Rivet / Phosphated Mandrel do not have a suffix (special order)

*** RivetKing® Steel Zinc Plated Rivet / Zinc Plated Mandrel have /IR as a suffix (stock)



1.800.BUY.RIVET