

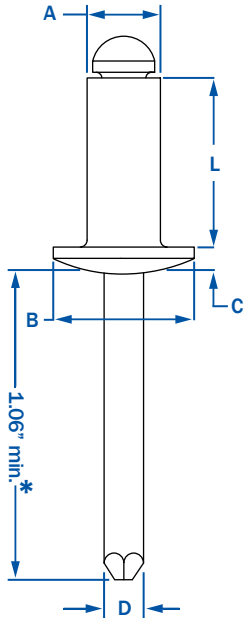
RIVETKING® ABS SERIES • ALUMINUM/STEEL RIVETS • OPEN END

RIVET: 5056 ALUMINUM • MANDREL: STEEL PHOSPHATED - RIVET: 5052 ALUMINUM • MANDREL: STEEL ZINC PLATED

ALUMINUM/STEEL RIVETS ARE OFFERED IN TWO CONFIGURATIONS. CELUS® BRAND, 5056 ALUMINUM WITH STEEL PHOSPHATED MANDREL AND RIVETKING® BRAND 5052 ALUMINUM WITH STEEL ZINC PLATED MANDREL. Phosphated mandrels reduce rivet gun jaw cleaning, while zinc plated mandrels provide for greater rust protection. The aluminum rivet body is bright polished to protect from oxidation. The ABS series is ranked #4 in shear and tensile strength in the standard open end rivet category.

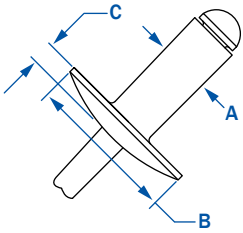


STANDARD FLANGE-DOME HEAD



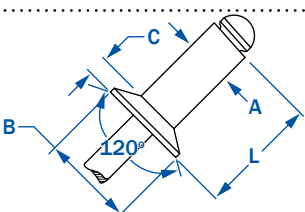
DIA.	PART NUMBER	GRIP RANGE	RIVET LENGTH	HEAD DIA.	HEAD HEIGHT	MANDREL DIA.	HOLE SIZE (DRILL #)	STRENGTH		Wt. lbs/M
								SHEAR	TENSILE	
3/32"	ABS - 32	.020 - .125	.250	.188	.032	.057	.097 - .100 (#41)	90	120	1.30
	ABS - 34	.126 - .250	.375					[70]	[80]	1.30
	ABS - 41	.020 - .062	.212							2.50
1/8"	ABS - 42	.063 - .125	.275	.250	.040	.076	.129 - .133 (#30)	170 [120]	220 [150]	2.50
	ABS - 43	.126 - .187	.337							2.60
	ABS - 44	.188 - .250	.400							2.70
	ABS - 45	.251 - .312	.462							2.70
	ABS - 46	.313 - .375	.525							2.80
	ABS - 48	.376 - .500	.650							3.10
	ABS - 410	.501 - .625	.775							3.10
5/32"	ABS - 412	.626 - .750	.900	.312	.050	.095	.160 - .164 (#20)	260 [190]	350 [230]	4.25
	ABS - 52	.020 - .125	.300							4.25
	ABS - 53	.126 - .187	.362							4.38
	ABS - 54	.188 - .250	.425							5.17
	ABS - 56	.251 - .375	.550							5.17
3/16"	ABS - 58	.376 - .500	.675	.375	.060	.114	.192 - .196 (#11)	380 [260]	500 [320]	6.20
	ABS - 62	.020 - .125	.325							
	ABS - 63	.126 - .187	.387							
	ABS - 64	.188 - .250	.450							
	ABS - 66	.251 - .375	.575							
	ABS - 68	.376 - .500	.700							
	ABS - 610	.501 - .625	.825							
	ABS - 612	.626 - .750	.950							
	ABS - 614	.751 - .875	1.075							
	ABS - 616	.876 - 1.00	1.200							
1/4"	ABS - 84	.020 - .250	.500	.500	.080	.151	.257 - .261 (F)	700 [460]	920 [560]	10.33
	ABS - 86	.251 - .375	.625							13.50
	ABS - 88	.376 - .500	.750							14.00
	ABS - 810	.501 - .625	.875							15.00
	ABS - 812	.626 - .750	1.000							16.00
	ABS - 814	.751 - .875	1.125							16.00
	ABS - 816	.876 - 1.00	1.250							21.00

LARGE FLANGE



1/8"	ABS - 42LF	.063 - .125	.275	.375	.065	.076	.129 - .133 (#30)	170 [120]	220 [150]	2.60
	ABS - 43LF	.126 - .187	.337							2.70
	ABS - 44LF	.188 - .250	.400							2.70
	ABS - 46LF	.313 - .375	.525							3.25
5/32"	ABS - 48LF	.376 - .500	.650	.468	.075	.095	.160 - .164 (#20)	260 [190]	350 [230]	5.00
	ABS - 52LF	.020 - .125	.300							
	ABS - 54LF	.188 - .250	.425							
3/16"	ABS - 56LF	.251 - .375	.550	.625	.092	.114	.192 - .196 (#11)	380 [260]	500 [320]	8.00
	ABS - 62LF	.020 - .125	.325							9.00
	ABS - 64LF	.188 - .250	.450							9.33
	ABS - 66LF	.251 - .375	.575							10.50
	ABS - 68LF	.376 - .500	.700							10.50
	ABS - 610LF	.501 - .625	.825							11.50
	ABS - 612LF	.626 - .750	.950							12.00
1/4"	ABS - 614LF	.751 - .875	1.075	.750	1.07	.151	.257 - .261	700 [460]	920 [560]	
	ABS - 616LF	.876 - 1.00	1.200							

COUNTERSUNK



1/8"	ACS - 42	.063 - .125	.275	.220	.031	.076	.129 - .133 (#30)	170 [120]	220 [150]	2.60
	ACS - 43	.126 - .187	.337							2.60
	ACS - 44	.188 - .250	.400							2.70
5/32"	ACS - 54	.188 - .250	.425	.281	.040	.095	.160 - .164	260 [190]	350 [230]	4.13
3/16"	ACS - 64	.188 - .250	.450	.350	.050	.114	.192 - .196 (#11)	380 [260]	500 [320]	6.40
	ACS - 66	.251 - .375	.575							7.40

* 1/4" Diameter rivets have a 1.250 mandrel length minimum.
 ** Celus® 5056 Aluminum/Steel Phosphated are per IFI 114 Grade 19 and do not have a suffix
 *** RivetKing® 5052 Aluminum/Steel Zinc Plated are per IFI 114 Grade 18 are in bracketed above and have /IR as the suffix

1.800.BUY.RIVET

