

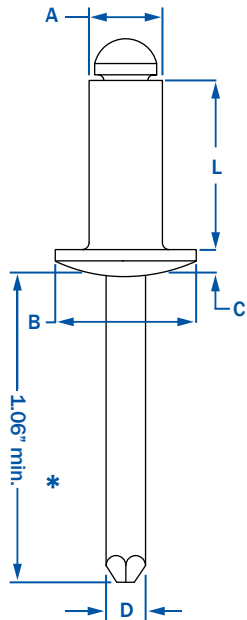
RIVETKING® ABS SERIES • ALUMINUM/STEEL RIVETS • OPEN END

RIVET: 5056 ALUMINUM • MANDREL: TRIVALENT ZINC PLATED STEEL

RIVETKING® ALUMINUM/STEEL RIVETS OFFER GREATER RUST PROTECTION THEN THE INDUSTRY STANDARD. Instead of a phosphate mandrel, we zinc plate our mandrel for better rust protection during storage. The additional zinc coverage also delays the rust potential of applied rivets. Along with the zinc plated steel mandrel is the bright polished aluminum rivet that is also protected from oxidation. The ABS series is ranked #4 in shear and tensile strength in the standard open end rivet category. PER IFI-114 GRADE 19.

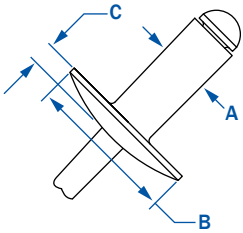


STANDARD FLANGE-DOME HEAD



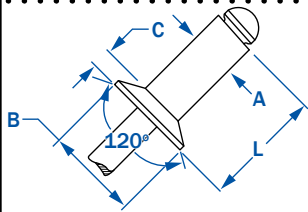
DIA.	PART NUMBER	GRIP RANGE	RIVET LENGTH	HEAD DIA.	HEAD HEIGHT	MANDREL DIA.	HOLE SIZE (DRILL #)	STRENGTH		Wt. lbs/M
								SHEAR	TENSILE	
3/32"	ABS - 32	.020 - .125	.250	.188	.032	.057	.097 - .100 (#41)	90	120	1.30
	ABS - 34	.126 - .250	.375							1.30
	ABS - 41	.020 - .062	.212							2.50
	ABS - 42	.063 - .125	.275							2.50
1/8"	ABS - 43	.126 - .187	.337	.250	.040	.076	.129 - .133 (#30)	170	220	2.60
	ABS - 44	.188 - .250	.400							2.70
	ABS - 45	.251 - .312	.462							2.70
	ABS - 46	.313 - .375	.525							2.80
	ABS - 48	.376 - .500	.650							3.10
	ABS - 410	.501 - .625	.775							3.10
	ABS - 412	.626 - .750	.900							
	ABS - 52	.020 - .125	.300							
5/32"	ABS - 53	.126 - .187	.362	.312	.050	.095	.160 - .164 (#20)	260	350	4.25
	ABS - 54	.188 - .250	.425							4.25
	ABS - 56	.251 - .375	.550							4.38
	ABS - 58	.376 - .500	.675							5.17
3/16"	ABS - 62	.020 - .125	.325	.375	.060	.114	.192 - .196 (#11)	380	500	6.20
	ABS - 63	.126 - .187	.387							7.00
	ABS - 64	.188 - .250	.450							7.20
	ABS - 66	.251 - .375	.575							7.75
	ABS - 68	.376 - .500	.700							8.75
	ABS - 610	.501 - .625	.825							9.00
	ABS - 612	.626 - .750	.950							
	ABS - 614	.751 - .875	1.075							
1/4"	ABS - 616	.876 - 1.00	1.200	.500	.080	.151	.257 - .261 (F)	700	920	10.33
	ABS - 84	.020 - .250	.500							13.50
	ABS - 86	.251 - .375	.625							14.00
	ABS - 88	.376 - .500	.750							15.00
	ABS - 810	.501 - .625	.875							16.00
	ABS - 812	.626 - .750	1.000							16.00
	ABS - 814	.751 - .875	1.125							21.00
	ABS - 816	.876 - 1.00	1.250							21.00

LARGE FLANGE



1/8"	ABS - 42LF	.063 - .125	.275	.375	.065	.076	.129 - .133 (#30)	170	220	2.60
	ABS - 43LF	.126 - .187	.337							2.70
	ABS - 44LF	.188 - .250	.400							2.70
	ABS - 46LF	.313 - .375	.525							3.25
5/32"	ABS - 48LF	.376 - .500	.650	.468	.075	.095	.160 - .164 (#20)	260	350	5.00
	ABS - 52LF	.020 - .125	.300							
3/16"	ABS - 54LF	.188 - .250	.362	.625	.092	.114	.192 - .196 (#11)	380	500	8.00
	ABS - 56LF	.251 - .375	.425							9.00
	ABS - 62LF	.020 - .125	.325							9.33
	ABS - 64LF	.188 - .250	.450							10.50
	ABS - 66LF	.251 - .375	.575							10.50
	ABS - 68LF	.376 - .500	.700							11.50
	ABS - 610LF	.501 - .625	.825							11.50
	ABS - 612LF	.626 - .750	.950							12.00
ABS - 614LF	.751 - .875	1.075								
ABS - 616LF	.876 - 1.00	1.200								
1/4"	ABS - 88LF	.376 - .500	.750	.750	1.07	.151	.257 - .261	700	920	

COUNTERSUNK



1/8"	ACS - 42	.063 - .125	.275	.220	.031	.076	.129 - .133 (#30)	170	220	2.60
	ACS - 43	.126 - .187	.337							2.60
	ACS - 44	.188 - .250	.400							2.70
5/32"	ACS - 54	.188 - .250	.425	.281	.040	.095	.160 - .164	260	350	4.13
	ACS - 64	.188 - .250	.450							6.40
3/16"	ACS - 66	.251 - .375	.575	.350	.050	.114	.192 - .196 (#11)	380	500	7.40

* 1/4" Diameter rivets have a 1.250 mandrel length minimum.

1-800-BUY-RIVET

R I V E T



K I N G®